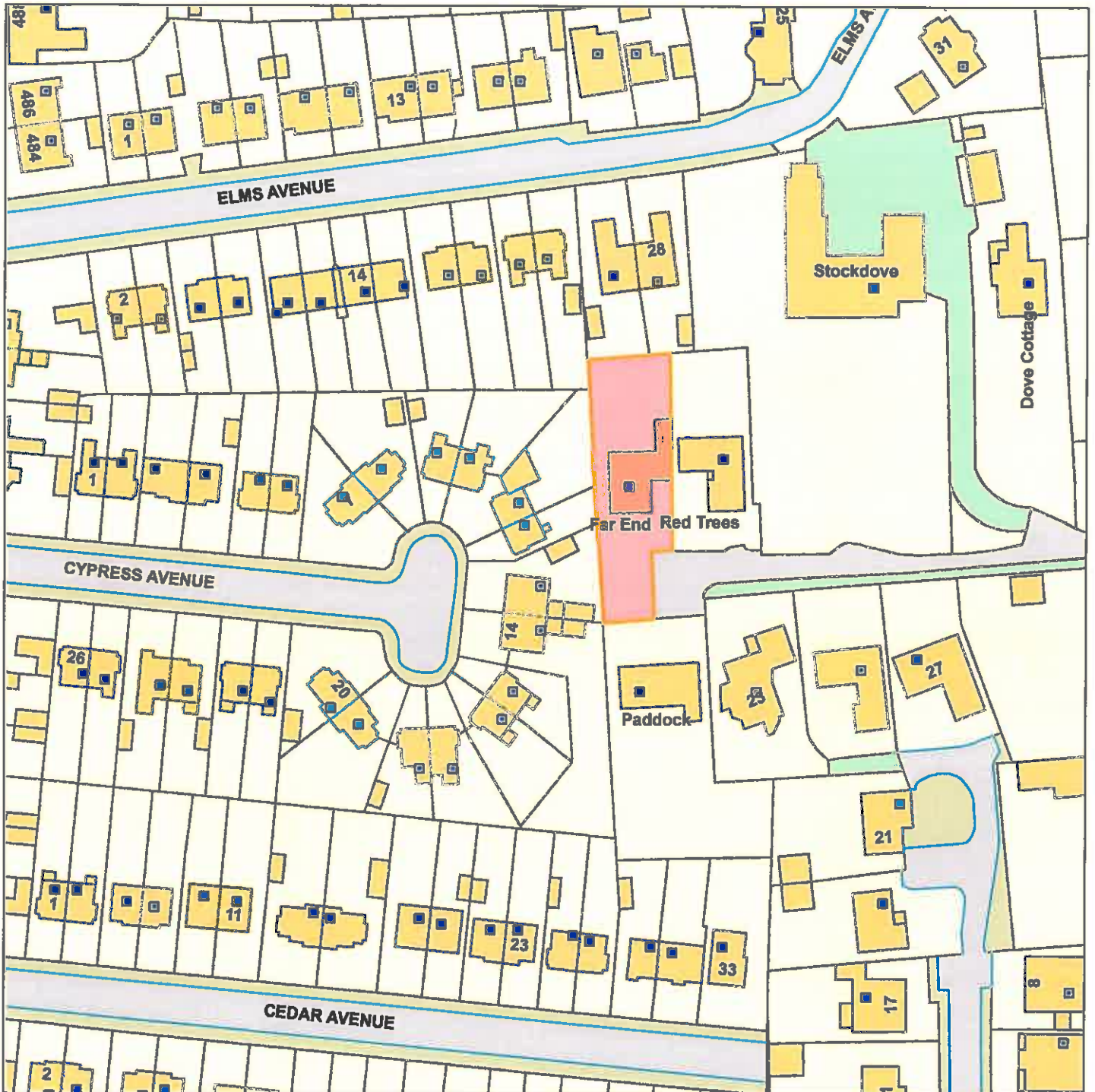


# Planning Committee

## Far End Holmefield Avenue Thornton Cleveleys



Scale : 1:1036

Reproduced from the Ordnance Survey map with the permission of the Controller of Her Majesty's Stationery Office © Crown Copyright 2012.

Unauthorised reproduction infringes Crown Copyright and may lead to prosecution or civil proceedings.

<b>Organisation</b>	Wyre Council
<b>Department</b>	Planning Department
<b>Comments</b>	Item 5
<b>Date</b>	23 January 2019
<b>SLA Number</b>	100018720